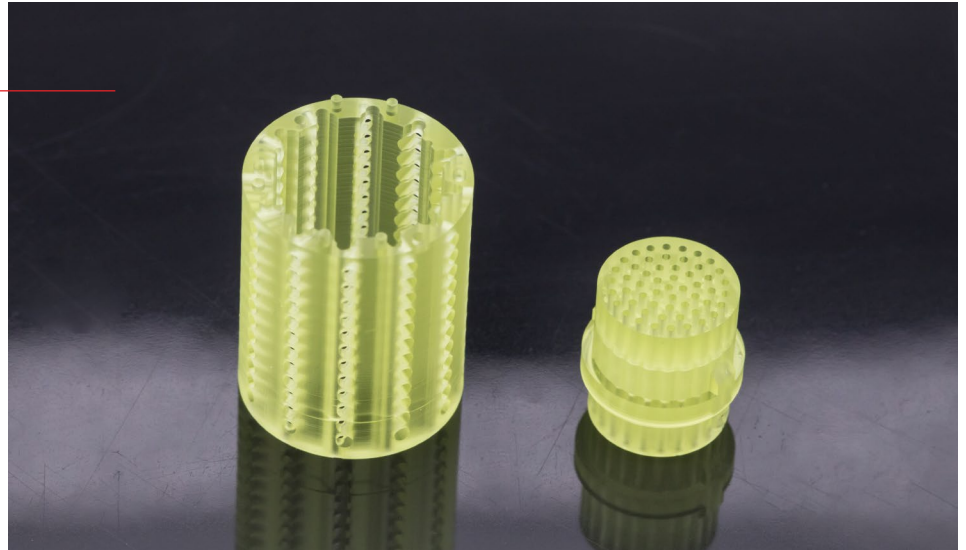


RG Resin

RG from the Forward AM Ultracur3D[®] photopolymer resin line is a durable engineering material which can be used to print functional end-use parts. Its key feature is that it doesn't uptake any water and is suitable for a wide range of applications such as electrical cases, snappers and functional prototyping.



		Cured Parts	Standard
Tensile Properties	TENSILE STRENGTH	42 MPa	ASTM D638
	ELASTICITY MODULUS	274.3 MPa	ASTM D638
	ELONGATION AT BREAK	11.8%	ASTM D638
Flexural Properties	BENDING STRENGTH	77.7 MPa	ASTM D790
	FLEXURAL MODULUS	2.1 GPa	ASTM D790
Temperature Properties	DISTORTION TEMPERATURE @0.45MPa	56.5 °C	ASTM D648 - 07
General Properties	HARDNESS	77 Shore D	ASTM D785
	VISCOSITY	1090 cP	-
	STANDARD COLOR	Yellow trans / Black	-

¹ Final properties are dependent on print conditions, post-processing operations, and part geometry.

² Test samples were UV cured and heat cured.