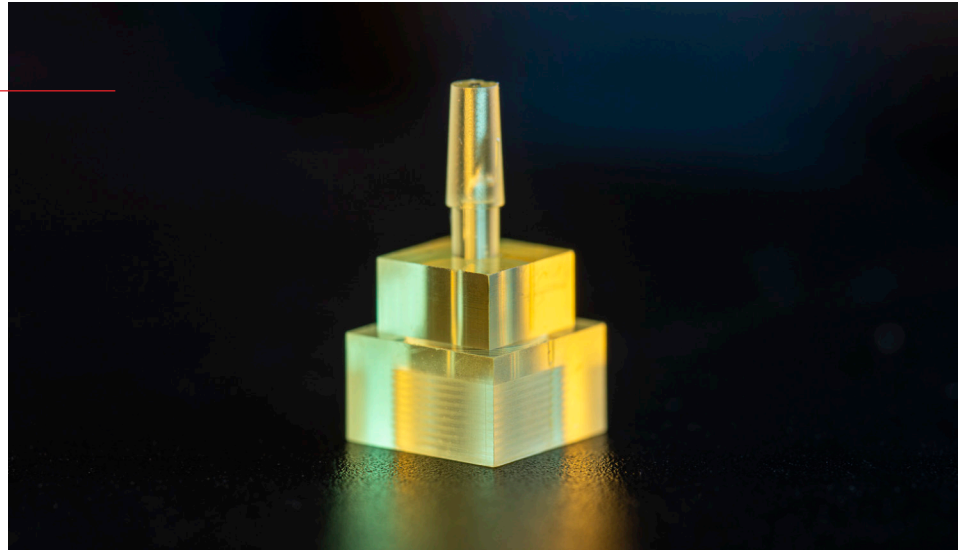


# UTL Resin

UTL offers high toughness and elongation for applications requiring high flexibility such as snap-fits.



	Cured Parts	Standard	
<b>Tensile Properties</b>	TENSILE STRENGTH	9.4 MPa	ASTM D638
	ELASTIC MODULUS	49 MPa	ASTM D638
	ELONGATION AT BREAK	51.5%	ASTM D638
	ELONGATION AT YIELD	6.7%	-
<b>Thermal Properties</b>	CTE @ 60C	150 $\mu\text{m}/\text{m}/^\circ\text{C}$	-
<b>General Properties</b>	CONTACT ANGLE	45-60°	ASTM D7334
	WATER ABSORPTION (24h)	3.14%	ASTM D570
	DIELECTRIC CONSTANT (10 GHz)	3.17	-
	HARDNESS	69 Shore D	ASTM D785
	VISCOSITY	185 cP	-
	STANDARD COLOR	Yellow trans / Black	-
COMPATIBLE BMF SYSTEMS	P140, S140, S230, S240	-	

<sup>1</sup> Final properties are dependent on print conditions, post-processing operations, and part geometry.

<sup>2</sup> Test samples were UV cured and heat cured.