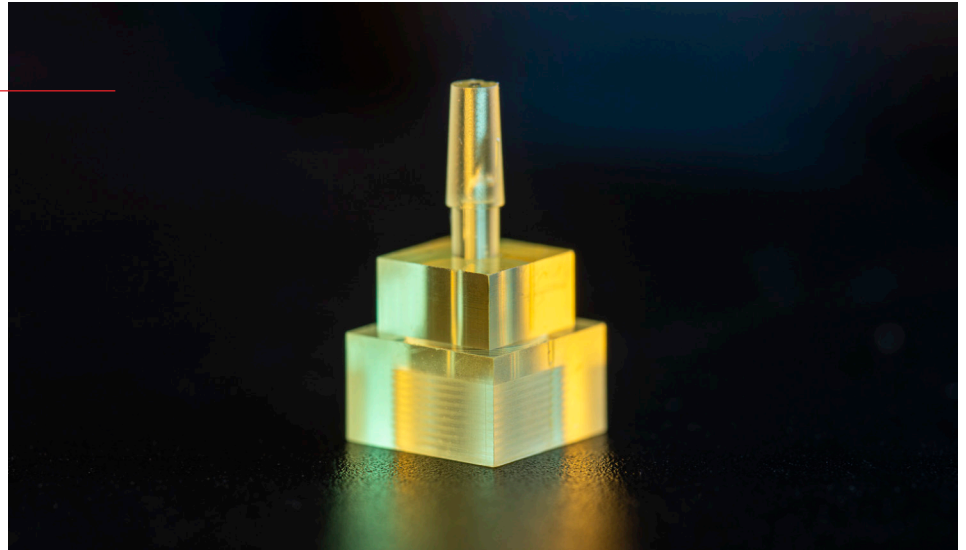


UTL Resin

UTL offers high toughness and elongation for applications requiring high flexibility such as snap-fits.



	Cured Parts	Standard	
Tensile Properties	TENSILE STRENGTH	14.1 MPa	ASTM D638
	ELASTIC MODULUS	567 MPa	ASTM D638
	ELONGATION AT BREAK	40.8%	ASTM D638
	ELONGATION AT YIELD	6.7%	-
Thermal Properties	CTE @ 60C	150 $\mu\text{m}/\text{m}/^\circ\text{C}$	-
	HDT @ 0.45Mpa	<30 $^\circ\text{C}$	-
General Properties	CONTACT ANGLE	45-60 $^\circ$	ASTM D7334
	WATER ABSORPTION (24h)	3.14%	ASTM D570
	DIELECTRIC CONSTANT (10 GHz)	3.17	-
	DF	0.029	-
	HARDNESS	69 Shore D	ASTM D785
	VISCOSITY	185 cP	-
	STANDARD COLOR	Yellow trans / Black	-
	COMPATIBLE BMF SYSTEMS	P140, S140, S230, S240	-

¹ Final properties are dependent on print conditions, post-processing operations, and part geometry.

² Test samples were UV cured and heat cured.